

Cleeve Park School cuts energy costs with NESS

More efficient use of energy results in immediate cost savings for heating and hot water, projected to average 17.5%



Background

Cleeve Park School, based in Bexley, Kent wished to make use of energy saving technologies, but, due to budget restrictions was unable to do so. However, through NESS (National Energy Saving Service), the School was able to start a programme to optimise their energy use and cut costs immediately.

The first phase of the programme was to install an energy management system to monitor and control the school's use of heating and hot water. A DEDICATEDengines (DEL) eFM internet based remote energy management system was installed to provide School management with the ability to monitor and control room temperatures and boiler activity. Installed in late August 2010, the use of the system has already shown significant savings through reduced boiler runs times.

Results

Cleeve Park School has two plant rooms for heating and hot water; Zone 1, the main boiler room, with three boilers, and Zone 2, a smaller room, with two boilers. There was no centralised BMS (Building Management System) – and the boilers were operated independently using basic timers and manual controls.

With the DEL eFM system installed, boiler run times in Zone 1 were reduced from 96.5 hrs to 40.75 hrs – a reduction of 55.75 hrs (57.7%), and in Zone 2, from 168 hrs to 40.75 hrs – a reduction of 127.25 hrs (75.7%). For the two zones, the overall reduction was from 264.5 hrs to 81.5 hrs – a reduction of 183 run hrs or 69%. **Based on the reduction in run times, the use of the DEL eFM system is resulting in projected boiler gas savings averaging 17.5%.**

The use of the DEL eFM system was made possible through the NESS Share™ programme, which incurs no front end cost and is paid for through a share of savings achieved.

Assistant Head Teacher Don Blaylock comments:

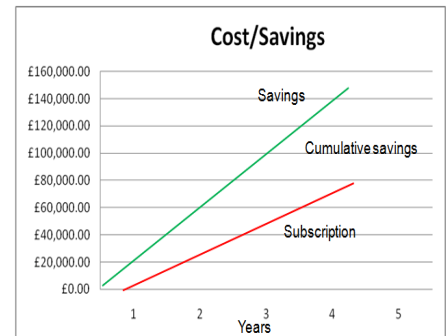
" We were looking for ways of reducing our energy costs, but were restricted by lack of funds. The NESS programme not only solved the funding issue, but also recommended technologies that had proven track records. We are delighted with the results so far. Now we are able to properly manage and control the operation of our heating and hot water through the eFM system resulting significant savings. We will be upgrading it to encompass electricity, still for no capital cost and paid for out of savings."

NESS UK Limited works with a growing pool of supplier partners covering a wide range of specialist technologies to provide their energy saving technologies as a managed service.

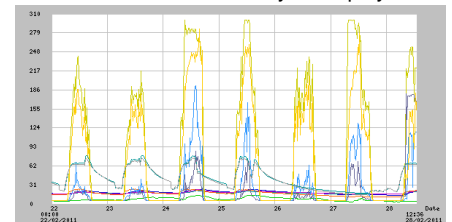
DEDICATEDengines Limited is a leading provider of remote carbon management hardware and software solutions. Systems are used in the public and private sectors, including universities, colleges, high schools and junior schools.



How NESS Share works



DEL eFM HVAC Analysis display



DEL eFM Gas usage display

